

Sterile Zone CCTV

Installation : VARIO

Project number : Sample Application

Customer : Raytec

Processed by : Raytec White-Light Design

Date : 05/2014

Project description:

This is a sample showing a Sterile Zone CCTV application using VARIO range.

Products used:

VARIO w8 - VAR-w8-1 (48W)

VARIO has unique range of features that help deliver enhanced even illumination and the very best night-time CCTV images.

The following values are based on exact calculations on calibrated lamps, luminaires and their arrangement. In practice, gradual divergences can occur.

Guarantee claims for luminaire data are excluded.

Relux and the luminaire manufacturers accept no liability for consequential damage and damage which is occasioned to the user or to third parties.

Object : Sterile Zone CCTV
Installation : VARIO
Project number : Sample Application
Date : 05/2014

Sterile Zone CCTV

Calculation results, Sterile Zone CCTV

3D luminance (raytracing), View from the left



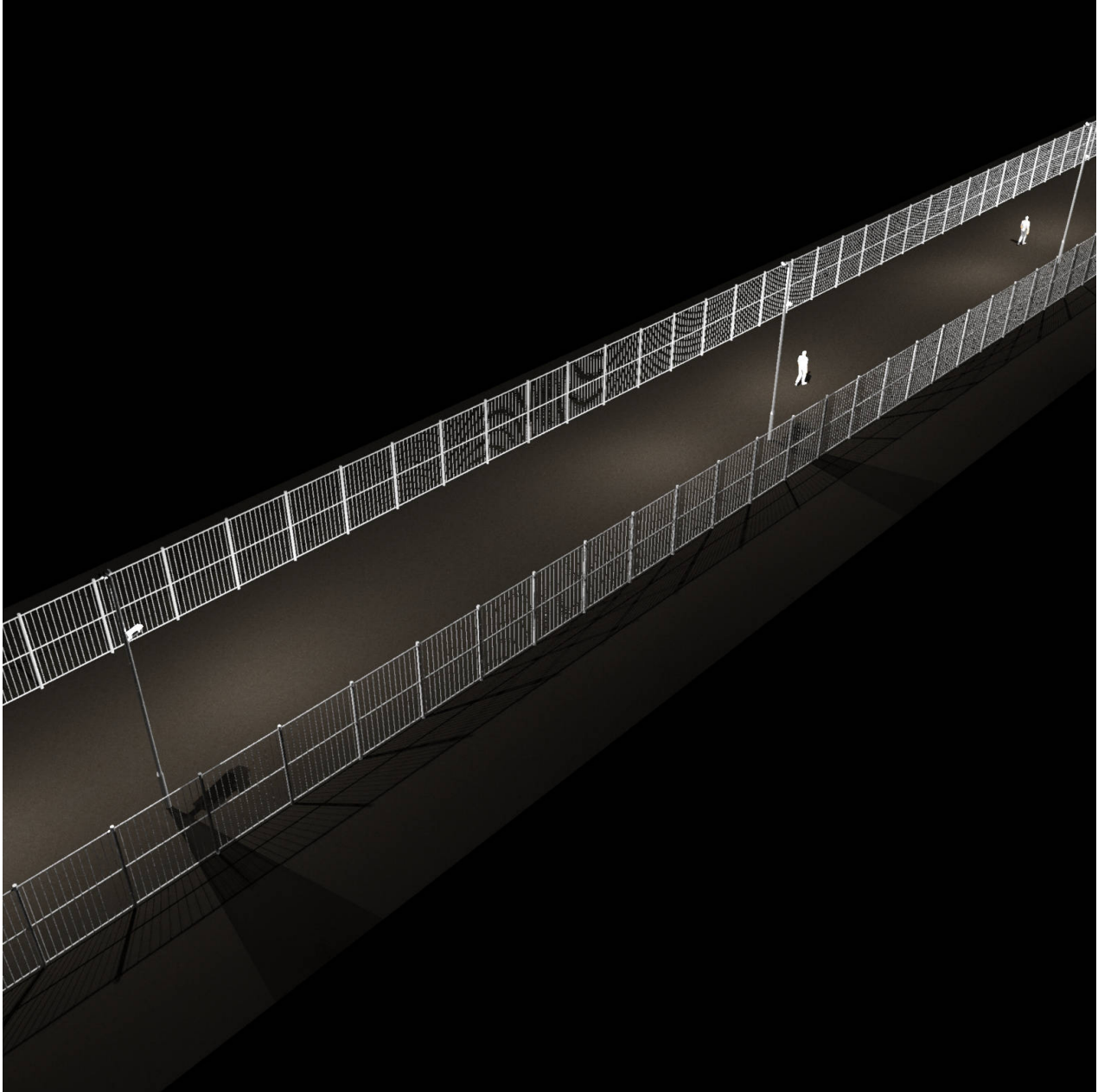
Luminance in the illustration:

Minimum: : 0 cd/m²
Maximum: : 47 cd/m²

Artificial light calculation : Direct part, with 1 inter-reflections

Calculation results, Sterile Zone CCTV

3D luminance (raytracing), Variable view



Luminance in the illustration:

Minimum: : 0 cd/m²

Maximum: : 0.38 cd/m²

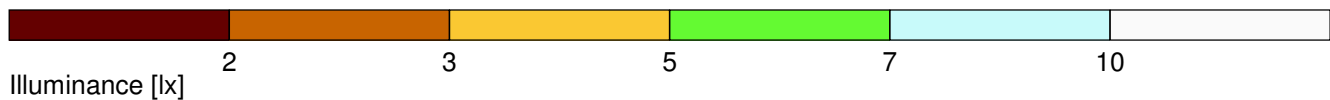
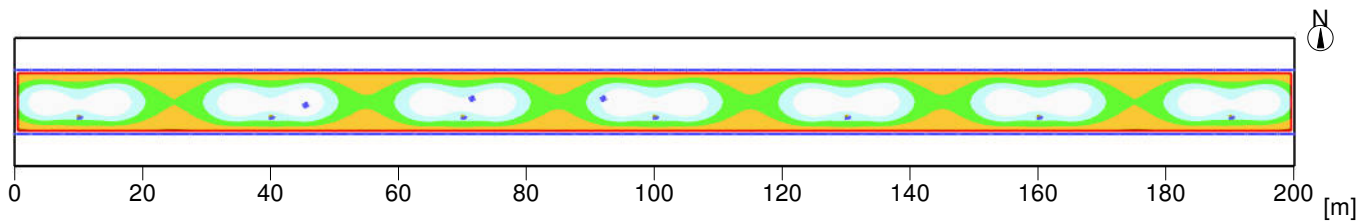
Artificial light calculation : Direct part, with 1 inter-reflections

Object : Sterile Zone CCTV
 Installation : VARIO
 Project number : Sample Application
 Date : 05/2014

Sterile Zone CCTV

Summary, Sterile Zone CCTV

Result overview, Sterile zone



General

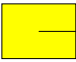

Calculation algorithm used : Direct component
 Height of evaluation surface : 0.00 m
 Maintenance factor : 0.85

Total luminous flux of all lamps : 26670 lm
 Total power : 468.2 W
 Total power per area (4000.00 m²) : 0.12 W/m²

Illuminance

Average illuminance Eav : 7.3 lx
 Minimum illuminance Emin : 3.2 lx
 Maximum illuminance Emax : 16.6 lx
 Uniformity Uo Emin/Emax : 1:2.31 (0.43)
 Diversity Ud Emin/Emax : 1:5.26 (0.19)

Type No.\Make

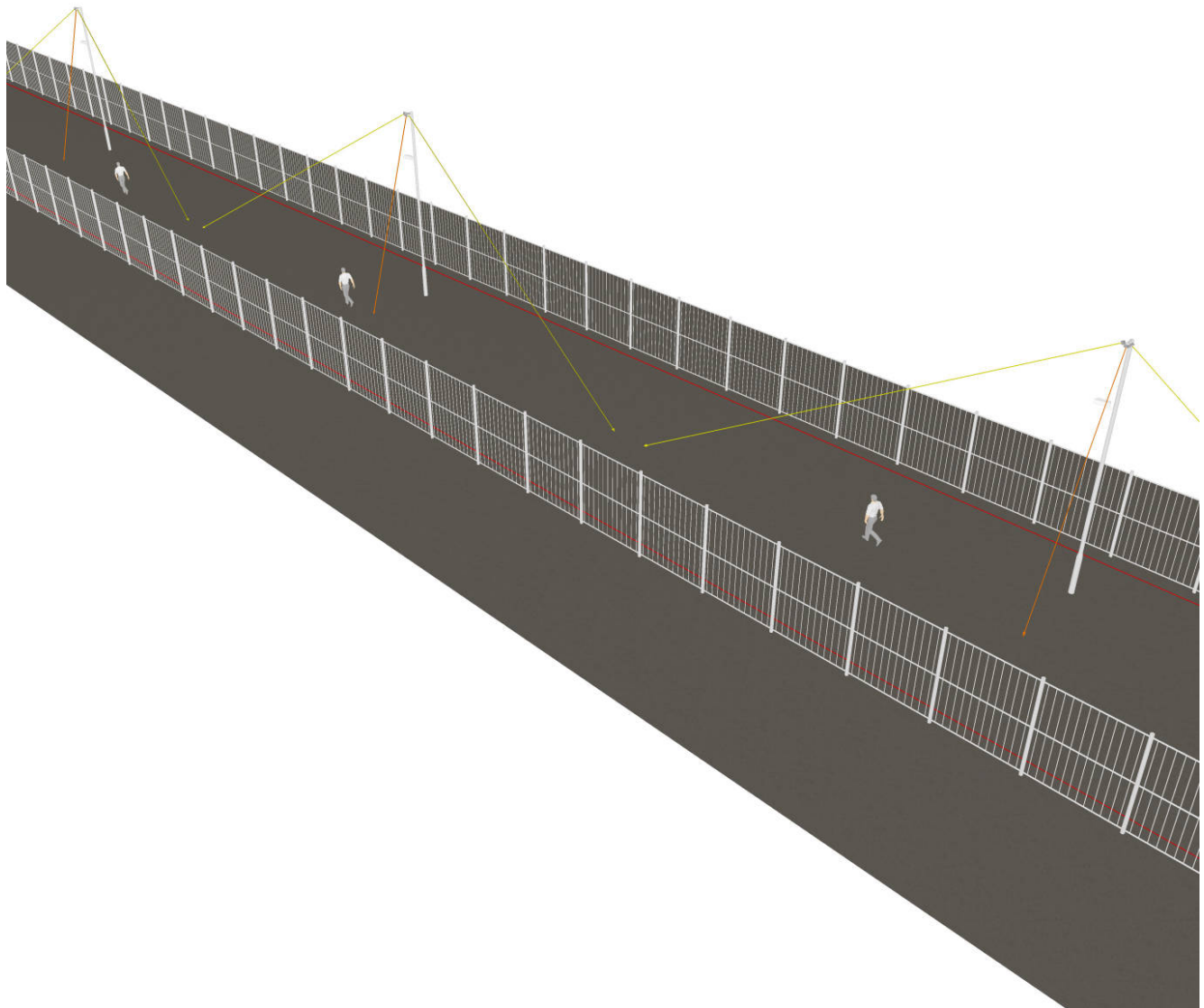
- | | |
|---|--|
| RAYTEC | |
| 1 | 14 |
|  | Order No. : VAR-w4-3 80x30
Luminaire name : VARIO w4-3 80x30 deg
Equipment : 1 x Low Voltage 12x LED Panel / 1312 lm |
| 2 | 7 |
|  | Order No. : VAR-w4-3 120x50
Luminaire name : VARIO w4-3 120x50 deg
Equipment : 1 x Low Voltage 12x LED Panel / 1186 lm |

Object : Sterile Zone CCTV
Installation : VARIO
Project number : Sample Application
Date : 05/2014

Sterile Zone CCTV

Description, Sterile Zone CCTV

3D view, Overview



Object : Sterile Zone CCTV
Installation : VARIO
Project number : Sample Application
Date : 05/2014

Sterile Zone CCTV

Calculation results, Sterile Zone CCTV

3D pseudo colours, Overview (E)

